

Roll No.

|  |  |  |  |  |  |  |  |  |  |  |  |  |  |  |
|--|--|--|--|--|--|--|--|--|--|--|--|--|--|--|
|  |  |  |  |  |  |  |  |  |  |  |  |  |  |  |
|--|--|--|--|--|--|--|--|--|--|--|--|--|--|--|

Total No. of Pages : 04

Total No. of Questions : 07

**B.Tech. (Marine Engineering) (2013 Onwards)**

**B.Tech. (ME) (2011 Onwards)**

**(Sem.-3)**

**MACHINE DRIVING**

**Subject Code : BTME-303**

**Paper ID : [A1140]**

**Time : 3 Hrs.**

**Max. Marks : 60**

**INSTRUCTION TO CANDIDATES :**

1. **SECTION-A** is **COMPULSORY** consisting of **NINE** questions carrying **TWO** marks each.
2. **SECTION-B** contains **FOUR** questions carrying **FOUR** marks each and students have to attempt any **THREE** questions.
3. **SECTION-C** contains **TWO** questions carrying **THIRTY** marks each and students have to attempt any **ONE** questions.

**SECTION-A**

**1. Write briefly :**

- a) What is the purpose of Caulking in riveted joints?
- b) Mention any **two** means for prevention of rotation of brasses in a Plummer Block.
- c) What are temporary fastenings?
- d) Draw the freehand sketch of unified thread profile giving its important proportions.
- e) Describe the unidirectional system of dimensioning.
- f) What is a flexible coupling?
- g) What are multi-start threads?
- h) What is the difference between pitch and lead of a screw thread?
- i) What is the function of a key?

### SECTION-B

2. Draw freehand the full sectional front view of protective type flange coupling.
3. Name the various forms of square threads and give full details of any **one** form.
4. Sketch freehand the top view and sectional front view of a double riveted lap joint (zig-zag type).
5. Draw the three views of hexagonal nut and show all the proportions.

### SECTION-C

6. Figure-1 shows the details of a lathe tail stock. Assemble the components and draw
  - (i) Full sectional front view
  - (ii) Right side view.
7. Figure-2 shows the details of a blow off cock. Assemble the components and draw
  - (i) Front view, right half in section
  - (ii) Top view.

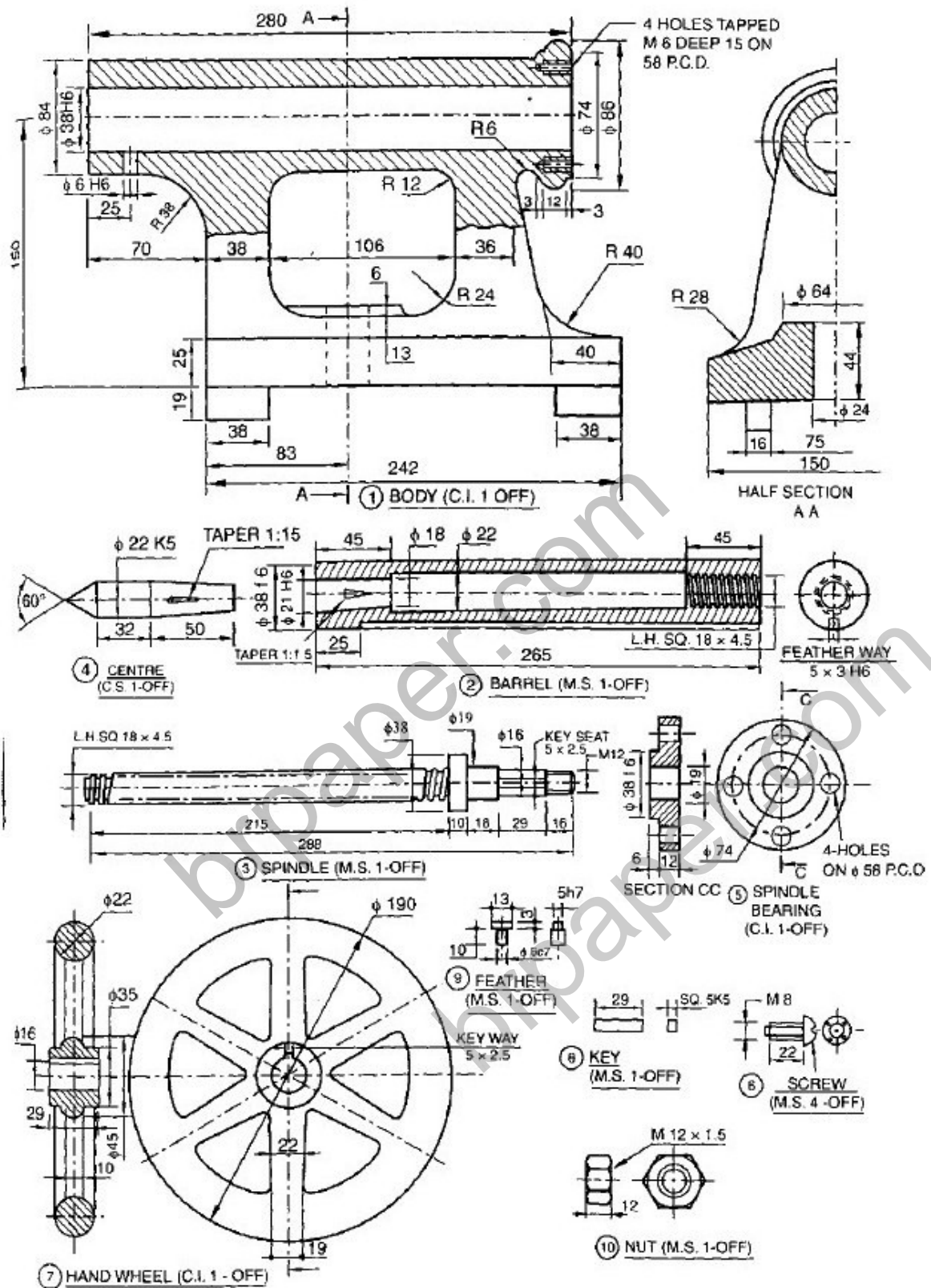


Fig.1

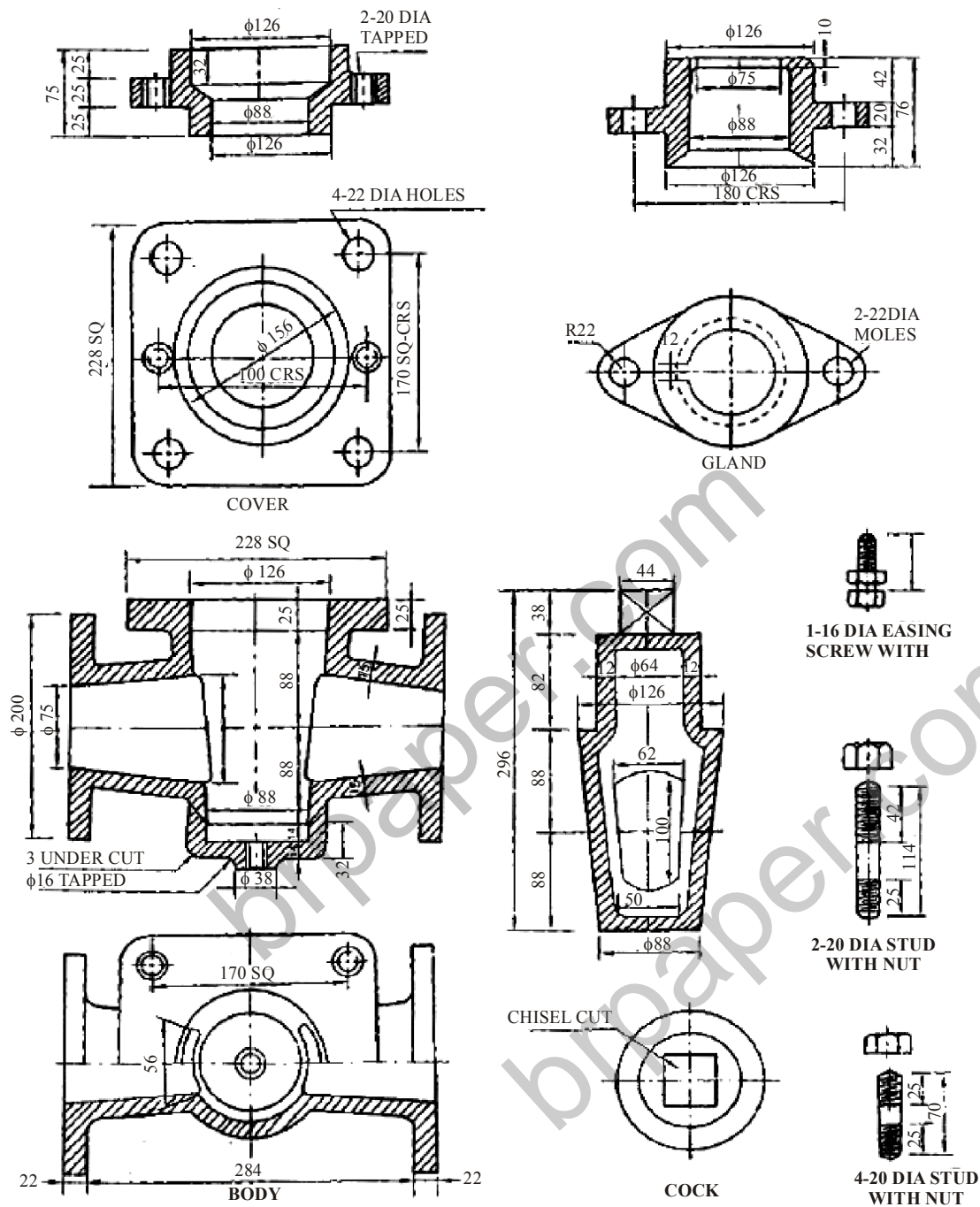


Fig.2